

12 February 2009



Annual Report 2007/8

Chair's Report

In 2008 we made a presentation to Mark Shanahan to mark his 10th anniversary as Music Director. When we look back we can see the remarkable musical development of the choir shown in the challenging works we presented this year.

The moving Poulenc Stabat Mater presented at our Autumn concert was only surpassed in difficulty by the boisterous Vaughan Williams Sea Symphony at our Spring concert, both of which the choir pulled off magnificently.

We are very privileged to work with a conductor of Mark's caliber, ably supported by Andrew Storey and Dan Ludford-Thomas who each make their own essential and different contributions to our wonderful musical team.

In between the two main concerts we held a lovely carol concert at St Peter de Beauvoir conducted by Dan, followed by an enjoyable social. A magnificent £896 was collected for the winter night shelter.

In the summer we revived the tradition of the away-day with a successful singing workshop held in Worthing with Ben Saul in the lead.

This year we held our first ever member survey receiving responses from 57 members. The results showed us the many things that people appreciate about the choir as well as providing lots of useful suggestions which the committee has tried to follow up on in the last 12 months.

Membership continued to grow and reached a record 161 by the end of the year. We think the intake of new members is bringing younger members into the choir! Our website is one valuable source of recruits, and visitors now average 100 per day.

I'll be standing down as chair at this AGM after serving for an enjoyable three years and I'd like to thank you all for your wonderful help and support.

James Diamond, Chair

AGM Agenda

1. Approval of minutes of AGM held on 7 February 2008
2. Chair's report
3. Treasurer's report
4. Musical director's report
5. Questions and answers
6. Motions
7. Election of management committee

Management Committee

The members of the management committee this year were:

James Diamond, Chair

Wendy Saville and Christine Turner, Vice Chairs

John Lavagnino, Secretary

Graham Turnbull, Treasurer

Jane Gibson, Asst Treasurer

Imogen Radford, Publicity Officer

Kirsty Norman, Social Secretary

Bill Miller, Tenor Representative

Karen Greig, Alto Representative

Lizzie Duncan, Deputy Alto Rep

Adam Griffith, Bass Rep

Sylvie Koestlé, Soprano Rep

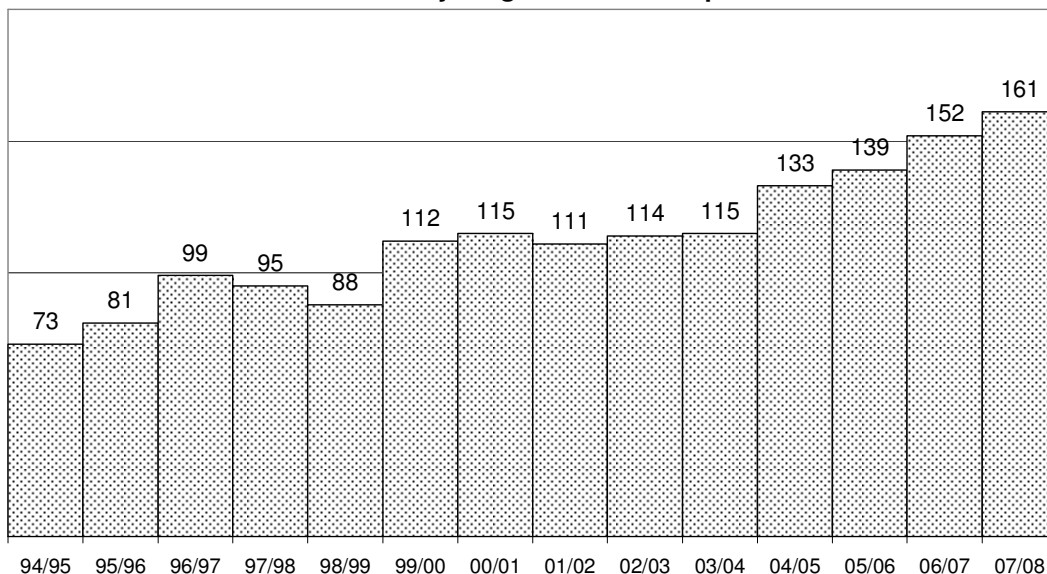
Sheila Ebbutt, Deputy Soprano Rep

Jemma Grieve, Membership Sec

Thanks to.....

- the Vicar and Churchwardens of St Lukes (Rehearsals)
 - the Vicar of St. Marks (Autumn 07)
 - the Rector and Churchwardens of St John at Hackney (Spring 08)
 - the Vicar and Churchwardens of St Peter de Beauvoir (Christmas 07)
 - Hackney Festival Support Group for staging
 - Kenny Everett for lighting
 - Imogen Radford for programme design, photography and display design
 - Jonathan Cate for poster and flyer design
 - London Metropolitan University for programme printing
 - Hanway Print Centre for concert flyers
 - Jacqui Compton, concert manager (Spring 08)
 - all the businesses which advertised in our concert programme (Spring 08)
 - Friends and family who helped at concerts
 - All the members of the committee for their hard work plus :-
 - Carole Sired (Membership database)
 - Kevin Perkins (Librarian)
 - Gill Brown (Banking)
 - Joyce Gibson (Banking and telephone sales)
 - Mary Julian (Concert refreshments)
 - Mary Troath, Liz Webber, Zena Goss, Lynne Troughton (Advertising Team)
 - Judy Spours (Volunteers, Autumn 07)
 - Jane Sugarman, Olive Home (St Luke's Keyholders)
 - All the members who set out chairs, move pianos, serve teas, publicise the concerts and sell tickets etc, etc, etc.....
-*We couldn't do it without you!!*

Hackney Singers Membership



Membership has grown steadily in the last few years and reached 161 at the end of the year.

About 30-40 members leave each year and 40-50 join.

One of the sources of new members is the website which now has over 100 visitors per day.

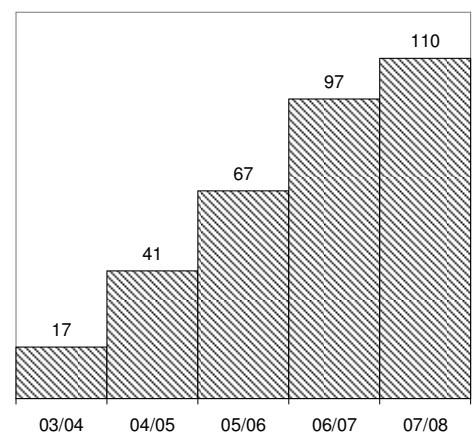
Many new members mention finding Hackney Singers through the website, and many make contact through our membership enquiry email address.

About half the visits are from search engines and the rest from real people!

The website is regularly updated with news, dates and concert reports.

Concert tickets are also available through the website, but most tickets continue to be sold by members.

Website visitors per day



James Diamond, Chair

Hackney Singers Charity Reg 294564
Statement of Financial Activity
1 September 2007 to 31 August 2008

Receipts	2007/08	2006/07
Unrestricted Funds	£	£
Gifts, Donations and other Voluntary Receipts		
Membership	13,643	13,386
Tax recoverable Gift Aid subscriptions (see debtors)	3,569	3,912
Sale of Donated Goods	1,190	933
Other and Sundry Receipts	(1) 755	10
Special Projects		739
Receipts from trading activities		
Charitable Trading		
Music Sales	2,855	3,159
Ticket and Programme Sales	(2) 10,082	9,737
Non-charitable Trading		
Advertising in Programmes etc.	(3) 2,330	2,360
Refreshment Sales (Net)	1,382	1,905
Other receipts		
Bank interest	813	632
Restricted Funds		
Grant from Hackney Council		994
TOTAL RECEIPTS	<u>36,619</u>	<u>37,767</u>
 Payments		
Unrestricted Funds		
Payments related directly to charitable objectives		
Music purchase and hire	2,453	3,610
Rehearsal costs/Workshop	13,063	11,010
Concert costs	14,188	14,202
Payments for publicity, fundraising, management and administration		
Publicity and Fundraising costs	1,900	1,622
Management and Administration	764	688
Other payments		
Cost of goods for resale	(4) 132	383
Including donations to other charities	(5) 1,289	442
Restricted Funds		
Management training		149
Equipent purchase		841
TOTAL PAYMENTS	<u>33,789</u>	<u>32,947</u>
 Net Receipts/Payments	<u>2,830</u>	<u>4,820</u>
Creditors	(6) -1,464	
None	0	0
Debtors		
Outstanding payments at year end	(7)	455
Net Surplus (-deficit)	<u>1,366</u>	<u>5,275</u>

Treasurer's Report

Membership Subscriptions

During the Year 2007/08, with our membership up 2%, we raised an income of £13,643 and from this we were able to generate a further £3,569 in Gift Aid; 95% of the subscriptions brought in Gift Aid. Subscription rates were up by only 3.3 % on the previous year. The fees paid to our musical team were

also increased in line with subscriptions. The committee is committed to a regular annual review of fees when we review the subscriptions. We value the commitment of our Music team and we appreciate that this must be reflected in our fees policy.

Concert Income

We held two major concerts in this year.

May 10th 2008	R. V. Williams Sea Symphony with Forest Philharmonic	Loss £3269
Nov 10th 2007	Poulenc Stabat Mater	Loss £627

The overall loss on our performances was £3770. This loss was much less than in the previous year (£5086). Thanks James for working so hard to keep the costs down.

Reserves Policy

The choir's reserves policy states that we must retain reserves of between 6 and 9 months of the running costs. The closing balance for unrestricted funds was £19,943 and since our total payments for the year came to £33,789, we ended the year with enough for 7 months running costs; well within policy.

Finally

My thanks go to all members of the Finance team: Assistant Treasurer Jane Gibson; Gill Brown and Carole Sired who maintain the membership records and payments; and Joyce Gibson who accounts for the rehearsal monies. Thanks also to Mary Troath and Liz Webber who co-ordinate the advertisement sales, and again to Jane Gibson who coordinates the ticket sales. Finally, thanks to all choir members who donated goods for resale, and Jemma Grieve for organising these sales.

Graham Turnbull, Treasurer

Balance Sheet			
		2007/08	2006/07
Opening Balance		18,614	13,338
Annual Income		36,619	37,767
Debtors at year end	(7)	<u> </u>	455
		<u>55,233</u>	<u>51,560</u>
Annual Expenditure		33,789	32,947
Creditors at year end		1,464	0
Unaccounted	(8)	33	
Closing Balance			
Unrestricted funds		19,943	18,610
Restricted funds		<u> 4</u>	<u> 4</u>
		<u>55,233</u>	<u>51,561</u>
	Community Account (Current Account)	2,322	4,449
	Deposit Account 1		
	Scottish Widows High Interest Account	14,092	13,425
	Monetary Asset (debtors money) (7)	4,747	455
	(creditors' money) (6)	-1,464	
	Cash	<u> 250</u>	<u> 285</u>
		<u>19,947</u>	<u>18,614</u>

Notes

- (1) Includes Worthing Trip (£345), Forest Phil payment (350) and correction for float accounting
- (2) Total income, including £68 paid in 08/09, Paypal £541
- (3) Includes debtors £1015 and also £310 paid in by 06/07 debtors
- (4) Goods for resale - mostly big expenditures for rehearsal refreshments, otherwise netted off
- (5) Donation to St. Peter's Night Shelter £841
- (6) Outstanding payment to HFSG for staging hire etc for Spring Concert. HFSG have gone into liquidation
- (7) Total Debtors £4747, includes Gift Aid £3569, Tea Money £106, Advertising £1015, Ticket Money £68
Note: these debtor amounts have been included in the receipts to improve clarity.
(In previous years the debtors income is added as an adjustment later.)
- (8) There is an unaccounted discrepancy of £33 in the balance sheet.